

# Navigate in **Windchill PLM**

Training for Suppliers  
Arnaud Soret





# What is PLM ?

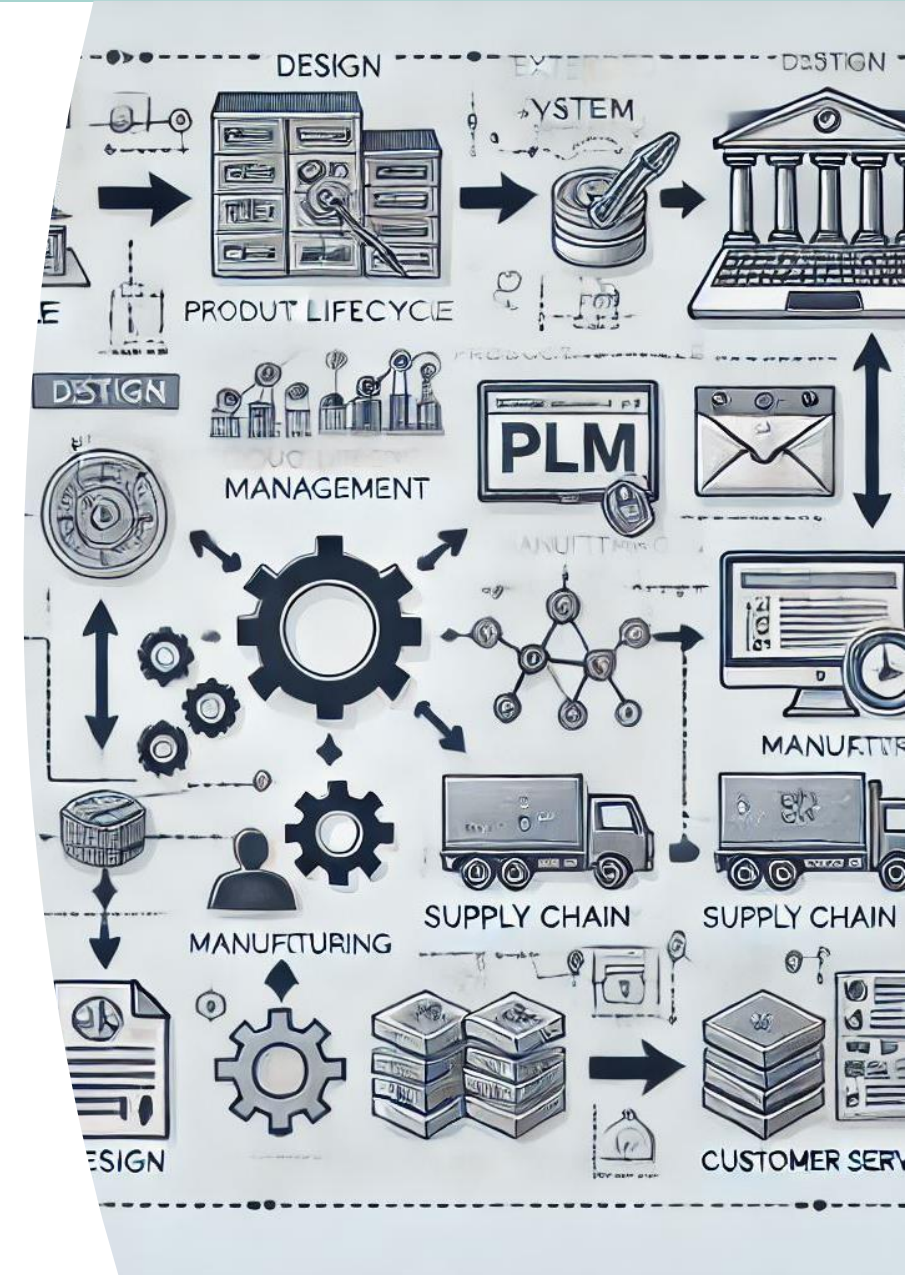
## PLM Solution Provider

PLM (*Product Lifecycle Management*) is a strategic process of managing the complete journey of a product from initial ideation, development, service, and disposal. It involves managing everything related to a product from cradle to grave.

PLM software is a solution that manages all the information and processes at every step of a product or service lifecycle across globalized supply chains. This includes data from items, parts, products, documents, requirements, engineering change orders, and quality workflows.



At Veoneer, we are transitioning to a new PLM solution called *PTC Windchill*. This new system will replace the old PLM servers once it goes live. The implementation of the new PLM solution is part of our efforts to enhance our infrastructure and ensure compliance with security standards.





# Windchill User Interface

# Windchill User Interface

## Overview

### Home

Displays the information specific to you – assignments, checked-out work, and more. Customize your Home page to show only the information that you need.

### Breadcrumb Trail

See where your object is located in the system. Click anywhere in the breadcrumb to quickly navigate to that location.

### Simple Search

Quickly perform a keyword search on selected object types.

### Advanced Search Tab

Most of the time, the simple search will be enough. Use the Search tab when you need more options, and to view your search history and saved searches.

### Browse Tab

Look through the information stored in the system. Select Recent Contexts to see the locations you visited recently.

### Navigator (Opened)

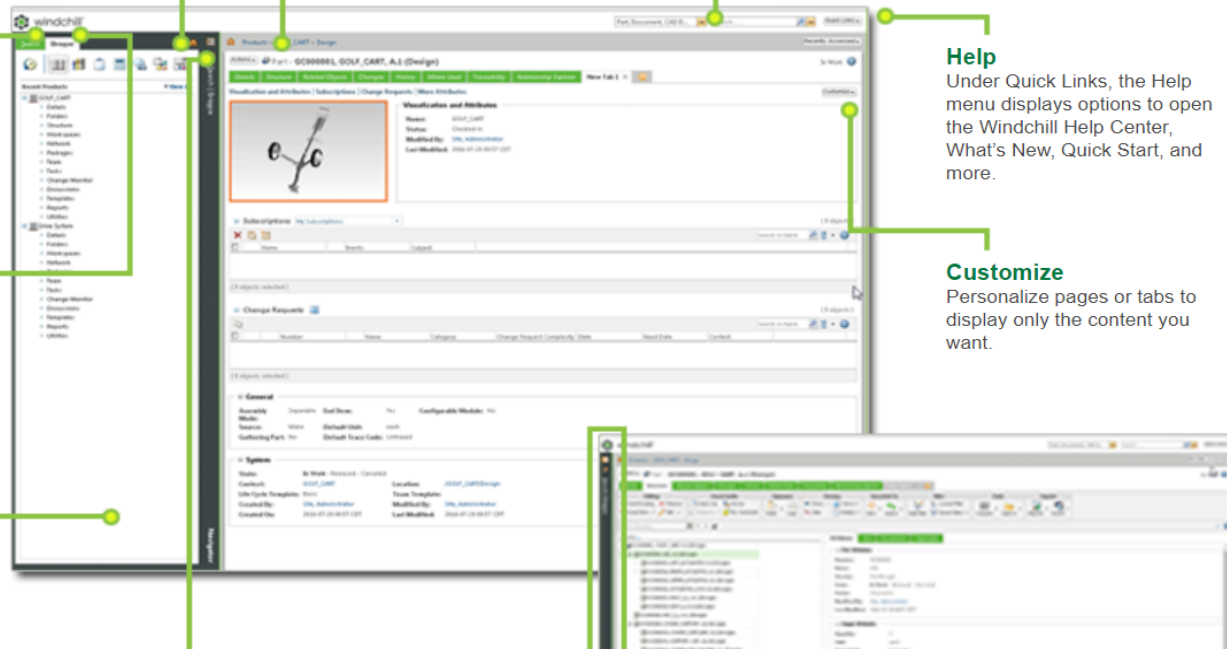
The Navigator slides on and off the page, taking up space only when you need it. Click off the Navigator to close it.

### Help

Under Quick Links, the Help menu displays options to open the Windchill Help Center, What's New, Quick Start, and more.

### Customize

Personalize pages or tabs to display only the content you want.



### Tips

- To see the picture in full resolution, go to Windchill: Quick Links -> Help -> Welcome to Windchill
- Windchill Help Center: Quick Links -> Help -> Windchill Help Center

# 2. The Home Page and Tables

## Overview

Back to Home page button  
(always visible)

Quick Search Box  
[👉 How to Quick Search](#)

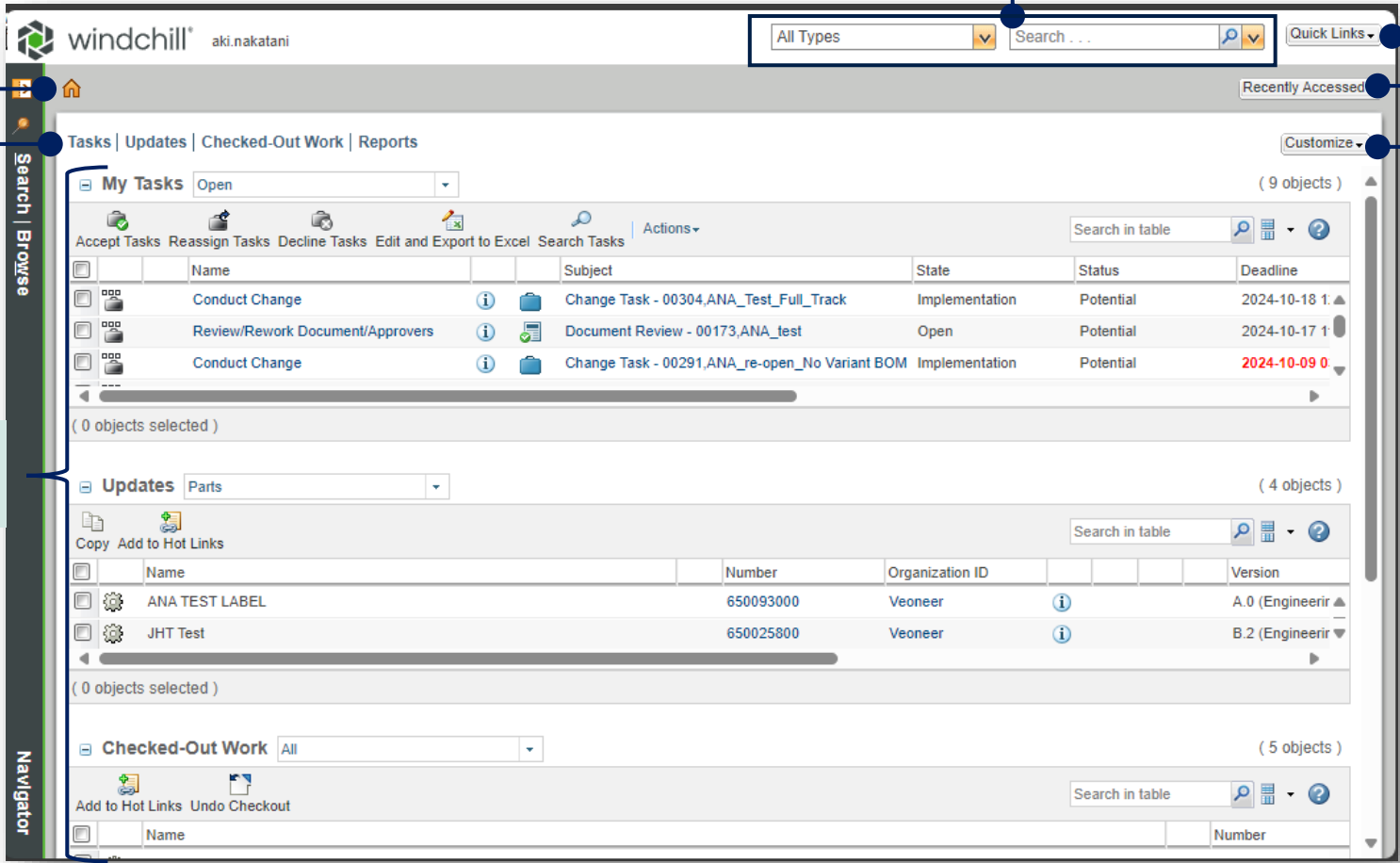
Links to common features

A list of recently accessed objects

Customize Tables on Home page  
[👉 Customize Tables](#)

A list of selected Tables display on the Home page

Tables for Each Items  
ex) Task, Updated



**My Tasks** (9 objects)

	Name	Subject	State	Status	Deadline
	Conduct Change	Change Task - 00304,ANA_Test_Full_Track	Implementation	Potential	2024-10-18 1:▲
	Review/Rework Document/Approvers	Document Review - 00173,ANA_test	Open	Potential	2024-10-17 1:▲
	Conduct Change	Change Task - 00291,ANA_re-open_No Variant BOM	Implementation	Potential	2024-10-09 0:▼

( 0 objects selected )

**Updates** Parts (4 objects)

	Name	Number	Organization ID	Version
	ANA TEST LABEL	650093000	Veoneer	A.0 (Engineerir ▲)
	JHT Test	650025800	Veoneer	B.2 (Engineerir ▼)

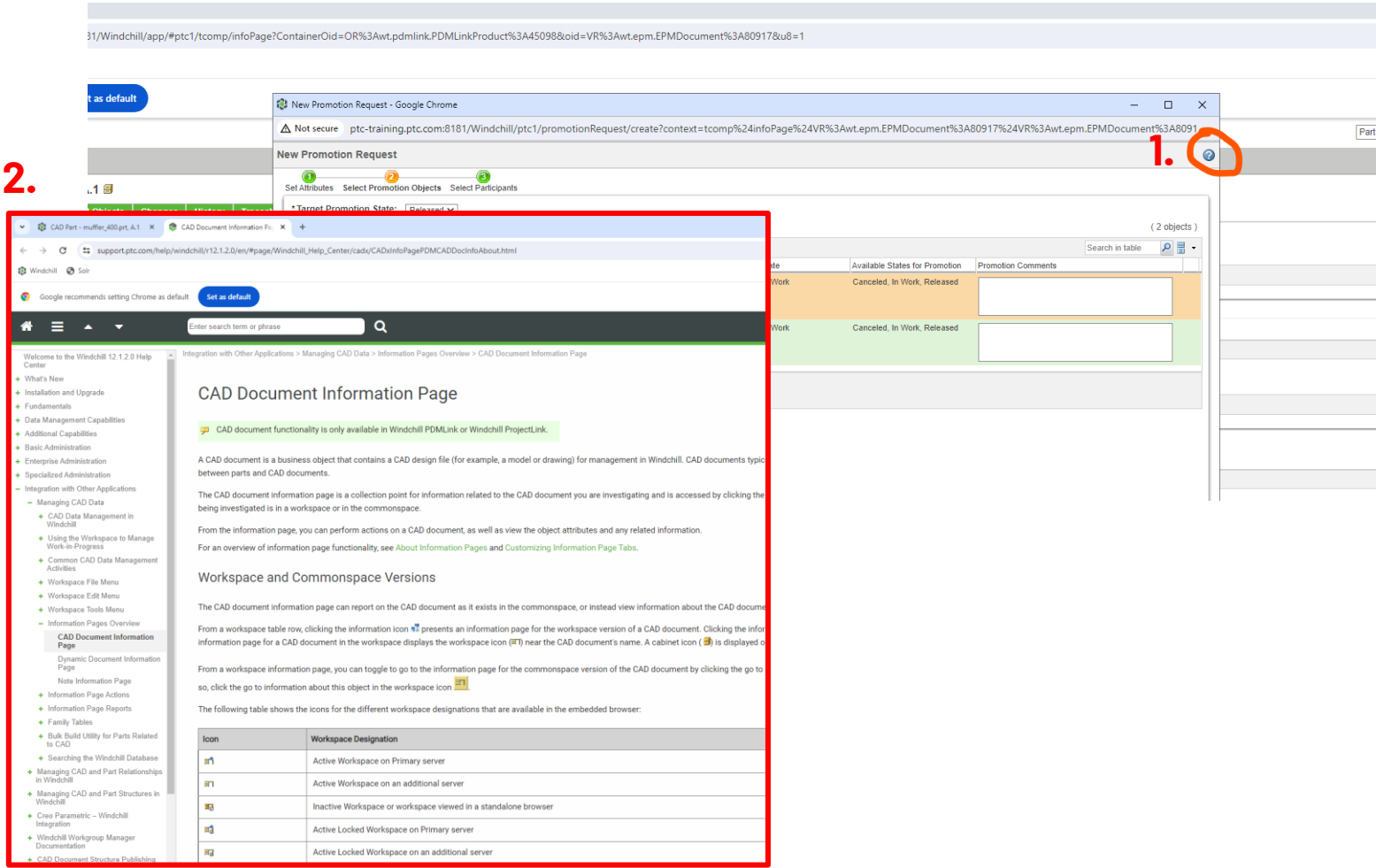
( 0 objects selected )

**Checked-Out Work** All (5 objects)

	Name	Number
--	------	--------

# Windchill User Interface

## Contextual Help



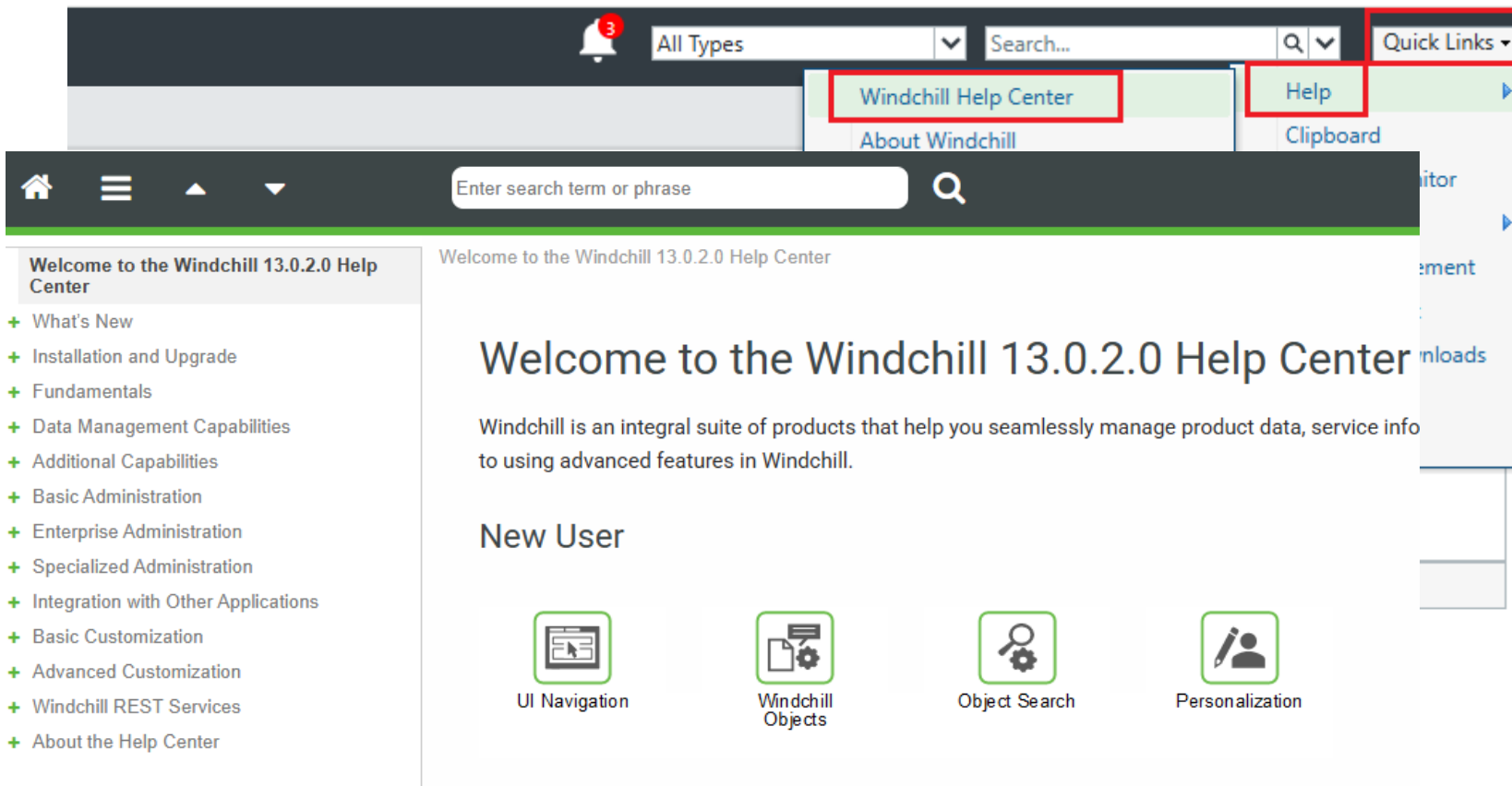
### Tips

- Where ever you are in Windchill, the help icon (1) once clicked, will open the help site (2) and displays additional information. Information about icons or specific featuers.
- This is a contextual help. Based on where in Windchill you are and click on help, different help articles are being shown.



# Windchill User Interface

## Static Help



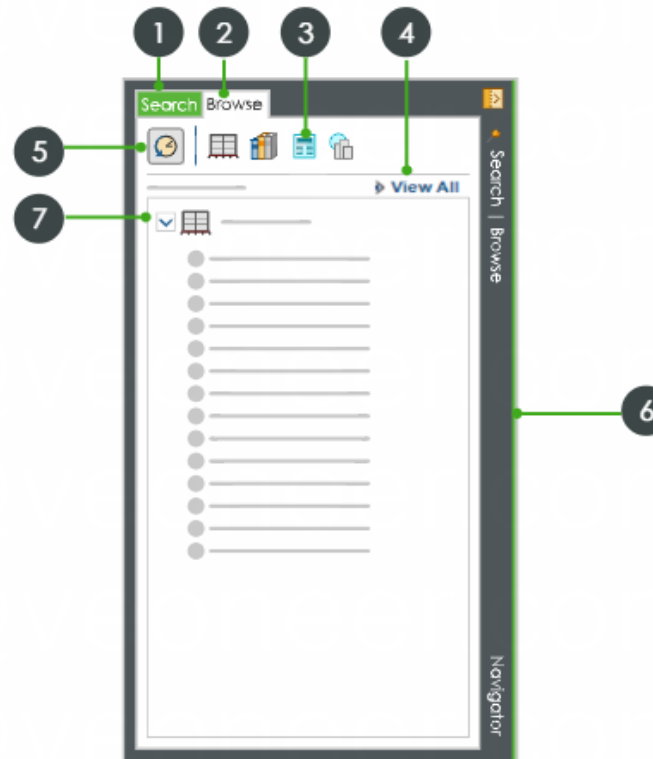
If the user needs to know more about Windchill the user is able to find it under

Quick Links -> Help -> Windchill Help Center

# Windchill User Interface

## Navigator

1. **Search tab** – Access to advanced search options
2. **Browse tab** – Access to contexts
3. **Context Type selection** – Types of contexts you can access
4. **View All** – Displays all contexts within that type which the user can access
5. **Recently Visited** – List of all recently visited product and library contexts
6. **Navigator width** – Drag handle to adjust the width of the Navigator pane
7. **Expand/Collapse context information** – Shows/hides additional context links



### Tips

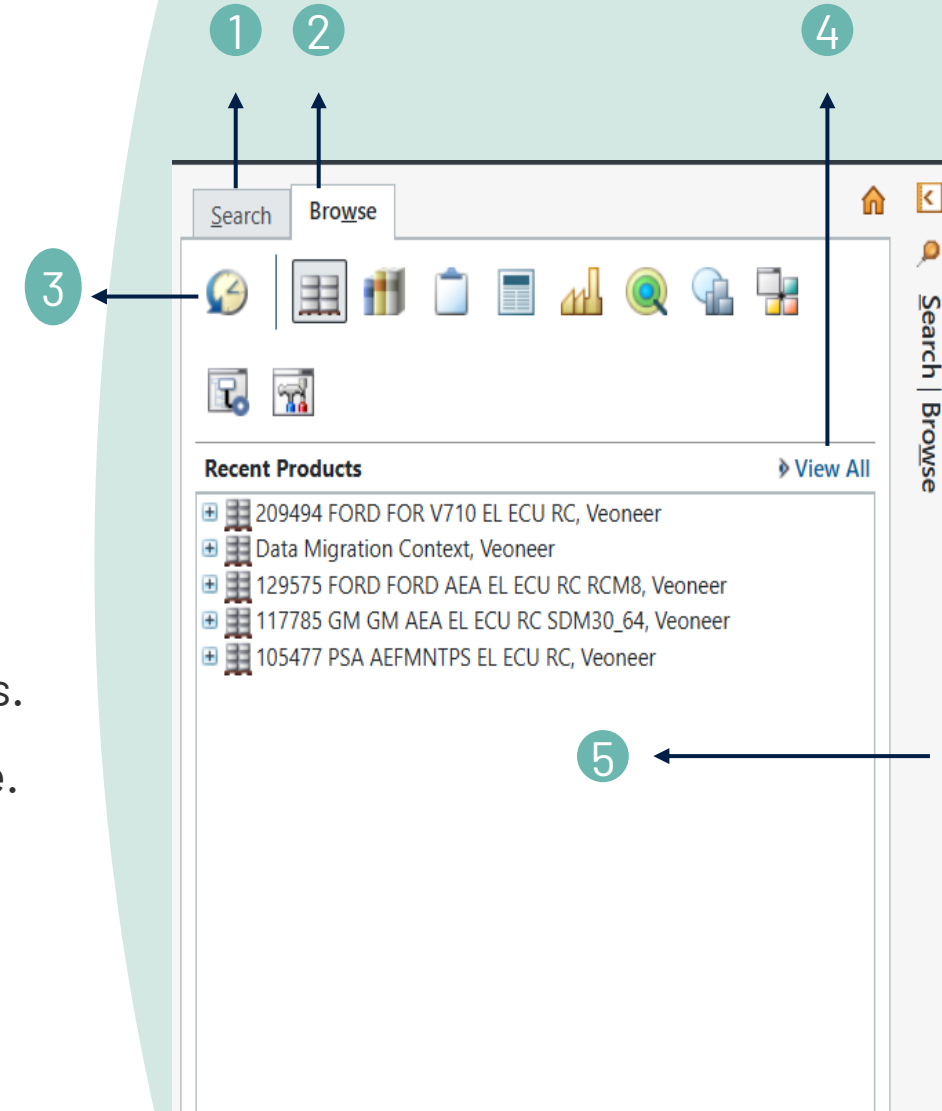
- (7) Data is only shown after you opened a product / library



# Windchill User Interface

## Navigator

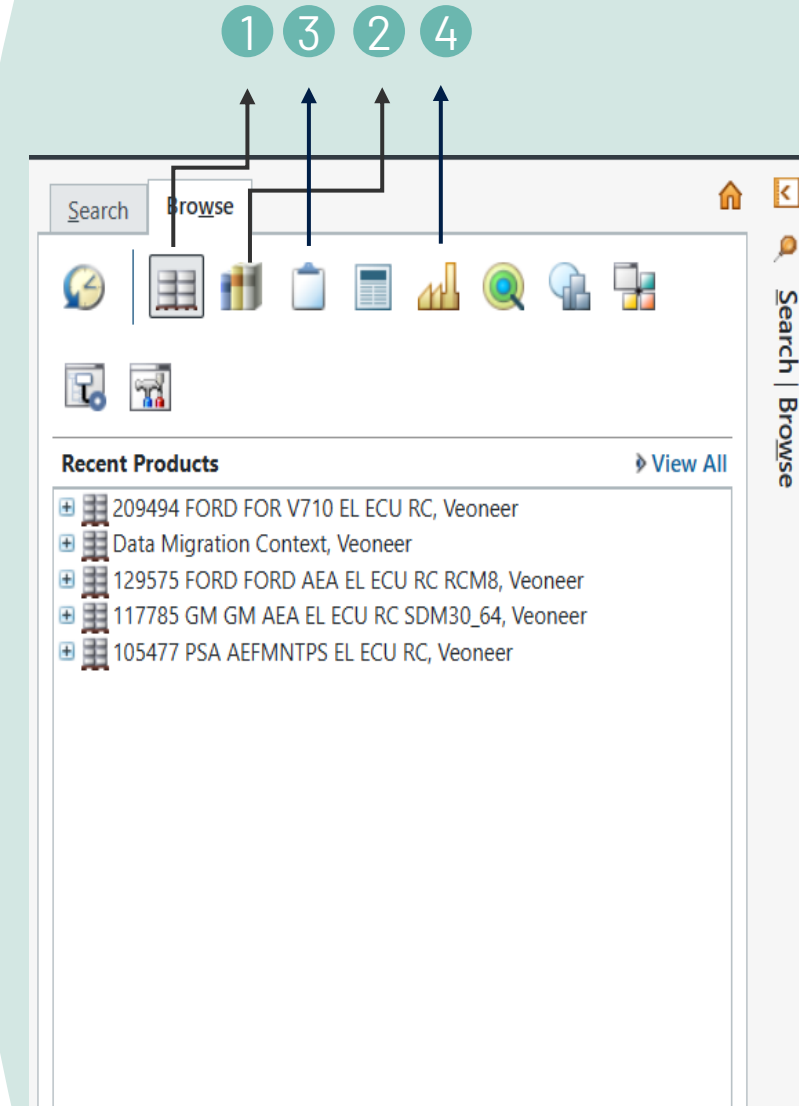
- 1) Search Tab – Access to advanced search options.
- 2) Browse Tab – Access to contexts.
- 3) Recently Visited – provides quick access to the items you've recently viewed or worked on, helping you easily find and reopen them.
- 4) View All – Displays all contexts with that type which the user can access.
- 5) Navigator Width – Drag handle to adjust the width of the navigator pane.



# Windchill User Interface

## Navigator

- 1) Recent Products - A product context is a shared workspace where team members can store, access, and manage all the information related to a product. In Enovia it was called "Design Authority".
- 2) Recent Libraries - It is a structured repository where users can store, organize, and manage reusable data and documents. We have the fasteners (105453) and components library (105218).
- 3) Recent Projects - involves managing and integrating supplier data within the product development process. This includes tracking supplier parts, improving part selection, and ensuring that manufacturer and vendor data are available early in the design phase. A project is a space where veoneer can collaborate with suppliers and exchange data.
- 4) Recent Suppliers -
  - **Manufacturers:** Companies that produce parts.
  - **Suppliers:** Vendors that provide parts.



# Need More ?

- This training document will develop along the use we make of new Windchill PLM
- In case you need a more specific training, please contact:
  - your Supplier Quality for topics related to SQP and PPAP
  - your Lead Buyer for other topics
- Your feedback is welcomed, please help us enriching this content







# veoneer

Protect Everyone  
in Every Crash.